

KPI Monitor

Standalone and Scalable Key Performance Indicator Monitoring Package

Utilizing the
JNIOR
Model 310

Phone 724-933-9350 | www.integpg.com | jniorsales@integpg.com

It's easy to get in touch with your equipment.

INTEG's KPI (Key Performance Indicator) Monitoring System puts you in touch with the information you need to make the most of your equipment. Production rates, machine availability, machine utilization, machine status and maintenance reminders can all be made available for viewing in real-time via a web browser from any computer.

Utilizing the INTEG JNIOR platform, simply connect the following signals:

- Machine Available (Running)
- Machine Producing
- Piece Made

The INTEG KPI System will then calculate the following information:

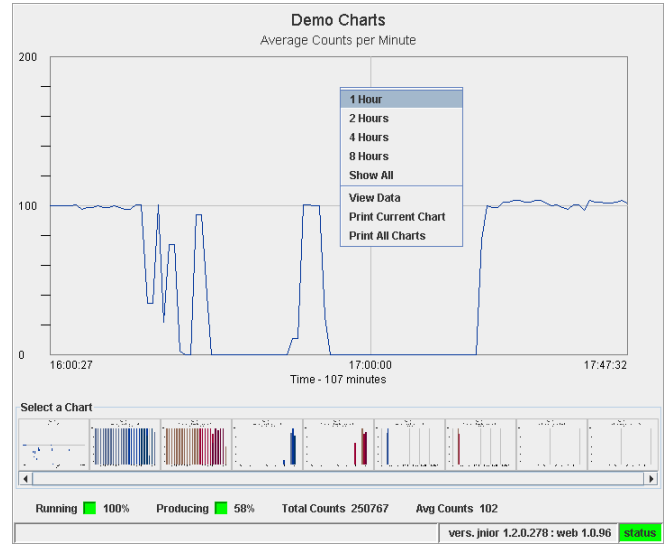
- Pieces per Minute (adjustable time period)
- Equipment Available (percentage of time)
- Equipment Producing (percentage of available time)

The data is stored in CSV formatted files on the JNIOR for viewing in a web page (and for transferring to a PC for further analysis and long term storage) as follows:

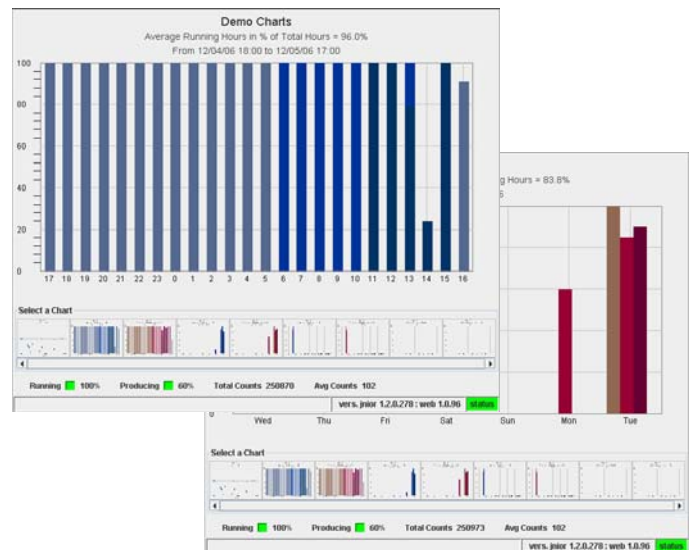
- Production Rate (per shift)
- Equipment Available and Producing Rates on a 24 hour rolling period, 7 day rolling period, monthly period and yearly period – all on a per shift basis (up to 3 shifts)

No need to modify or add to your existing control system (PLC, DCS, CNC) or PC-based systems using expensive and time-consuming hardware and software, instead, the INTEG KPI System gets you what you need at a fraction of the "total" cost. Just "wrap" one around each piece of equipment, put it on your plant Ethernet network and get in-touch with your equipment performance.

**Affordable for all your
M2M connectivity needs**



KPI Monitor web page can be viewed from any PC on the network. The above screen shows the pieces per minute (or other configurable time period) for the current shift. The time scale can easily be changed by the user.



KPI Monitor web page for viewing rolling 24 hour, weekly, monthly and yearly machine available and producing utilization rates.

KPI Monitor

Standalone and Scalable Key Performance Indicator Monitoring Package

Utilizing the
JNIOR
Model 310

Phone 724-933-9350 | www.integpg.com | jniorsales@integpg.com

KPI Monitor Specifications

Core Hardware (per machine) – JNIOR Model 310

- Standard I/O – 8 digital inputs, 8 relay outputs
- Expansion I/O – 4 analog inputs, 2 analog outputs
- RS232 port and RS232/RS485 port
- Web-based configuration
- 8 counters (up to 2Hz each)
- Usage Meters (inputs and outputs)
- I/O Slave Capabilities (output follows master input)
- Flexible E-mail management and notification
- Integrates information and data with other applications via TCP/IP, Modbus, OPC Server, Windows API (DLL)



The **JNIOR** network input/output resource for monitoring and integration of equipment.

Core Software – “Task Manager” (each JNIOR)

- Software application that runs on JNIOR
- Schedule multiple “tasks” to occur at a specific time or event
- Multiple “actions” per task for control, logging, reset or e-mail notification
- Tasks run 24/7

Core User Interface – “KPI Monitor” (each JNIOR)

- Real-time calculation of two fundamental KPI
 - Availability (“machine on”/time period)
 - Productivity (“producing”/“machine on”)
- Web-based for viewing from any computer
- Charts and stores hourly, weekly, monthly, yearly data

Optional Software Support Tools

- Manage multiple JNIORs for gathering data logs, backing up software and general JNIOR updates

Standard System Support Services

- INTEG can provide additional services in system design, installation and on-going support

Look Who’s Using the JNIOR

With thousands of units sold to OEMs and end-users, both small and large companies have found the JNIOR to be the most cost-effective and easiest way to integrate equipment for monitoring, control and optimization.

Kodak



TRANE



Fitting Your Needs

Let INTEG show you how to get in-touch with your important equipment. INTEG can provide the complete solution for your whole shop with our flexible and scalable system.

About INTEG process group

Established in 1999, INTEG helps businesses with equipment optimization and integration to more effectively control, monitor, and manage their assets. INTEG provides software and hardware solutions for network connectivity, systems integration, managing key performance indicators and improving process operations. The JNIOR is a cost-effective hardware and software automation system based on open standards with advanced Internet and IT-friendly network features.

Get more information about INTEG at www.integpg.com

