

Task Manager

A control and logging application for equipment management

Runs on the
JNIOR
Model 310

Phone 724-933-9350 | www.integpg.com | jniorsales@integpg.com

Get in touch with your equipment.

To track the productivity and performance efficiency of your equipment, you need real-time data at the ready.

INTEG's Task Manager puts you in touch with the information you need to make the most of your equipment.

Task Manager is a control, logging and notification software application for equipment management that runs out-of-the-box on INTEG's JNIOR™ automation platform.

Set tasks based on time and events.

Task Manager is configured with a straightforward Web interface loaded from the JNIOR through which you can set up tasks based on both time and events.

- Time-based tasks can be scheduled any time of the day or week and trigger depending on a set time of day. For example, if you create a task called "start of shift," Task Manager can process actions (reset counters, turn on status lights, send an e-mail, etc.) at the start of your shift each day.
- Event-based tasks trigger off of a change in state, a counter value reaching a set point, or a usage meter reaching a set point. For example, if you create a task called "maintenance check", Task Manager can send an e-mail when a usage meter reaches a certain value indicating maintenance is required.

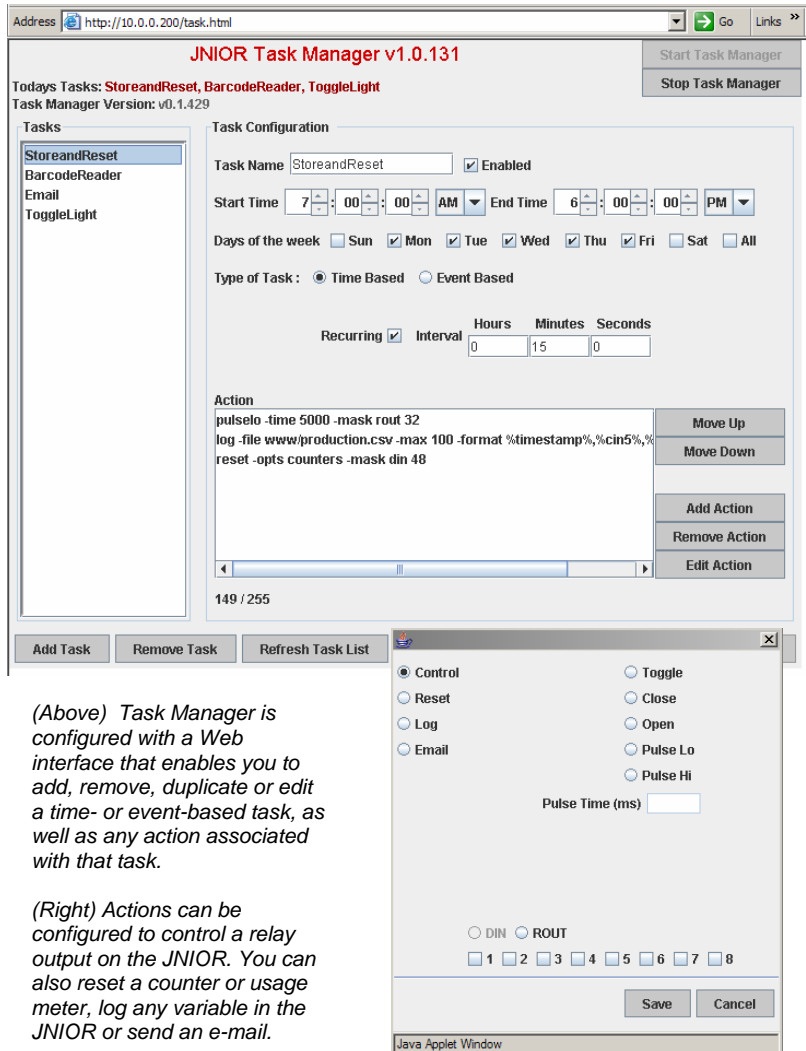
When a task is triggered, it executes all of its related "actions" – such as controlling an output, monitoring an input, resetting a counter or usage meter, logging data or sending an e-mail.

Easily add, remove, or edit a task or action from any PC on the network.

Get flexible logging capabilities.

With Task Manager, you can select whatever variables you want to log, such as the state of any input or output, counter values, usage meters or another value in the JNIOR registry. Every reading can include a unique timestamp.

Machine-specific information logged on the JNIOR – including how long your equipment ran, the number of counts, number of cycles and so on – can be saved in a 'csv' formatted file that can be viewed from your web browser, e-mailed to you or saved to a PC.



(Above) Task Manager is configured with a Web interface that enables you to add, remove, duplicate or edit a time- or event-based task, as well as any action associated with that task.

(Right) Actions can be configured to control a relay output on the JNIOR. You can also reset a counter or usage meter, log any variable in the JNIOR or send an e-mail.

Arm yourself with information.

Task Manager provides you with important data to help you calculate your equipment's efficiency, keep track of your equipment operation, increase your equipment's productivity and help you know when to schedule maintenance.

Task Manager gives you control over your equipment without having to write a program on your PC or modify your equipment control system (PLC, CNC). No expensive software drivers or extensive programming required.

Connect to your KPIs.

Put the data you collect right at your fingertips so you can measure progress toward your Key Performance Indicators (KPIs) – factors that include machine availability and productivity. INTEG's KPI Monitor software add-on provides this data in hourly, daily, weekly, monthly and yearly web based charts.

Task Manager

A control and logging application for equipment management

Runs on the
JNIOR
Model 310

Phone 724-933-9350 | www.integpg.com | jniorsales@integpg.com

Time- and event-based tasks

Task Configuration

Task Name Enabled

Start Time : : AM End Time : : AM

Days of the week Sun Mon Tue Wed Thu Fri Sat All

Type of Event : Time Based Event Based

Recurring Interval

Hours	Minutes	Seconds
<input type="text" value="0"/>	<input type="text" value="15"/>	<input type="text" value="0"/>

(Left) A time-based task triggers at the start time and optionally on a recurring interval, continuing until the end time.

(Right) An event-based task triggers off of a change in state, a counter value reaching a set point, or a usage meter reaching a set point.

Task Configuration

Task Name Enabled

Start Time : : AM End Time : : AM

Days of the week Sun Mon Tue Wed Thu Fri Sat All

Type of Event : Time Based Event Based

Transition

Counter Low to High High to Low Either DIN ROUT #

Usage Meter

Task Manager Features

- Accurate and reliable
- Enables real-time equipment monitoring to increase equipment utilization
- Easy to set-up and configure via the web-based screen
- Schedules tasks based on time *and* events
- Provides control and logging capabilities
- Generates a 'csv' formatted file so you can easily view and manipulate the data in a spreadsheet or database program
- Limits file size to avoid overextending memory capacity
- Provides 500 KB (approx. 20,000 data points) of memory for data storage
- Does not require programming or modification of existing equipment PLC



JNIOR runs Task Manager and can also interface with applications on other computers via TCP/IP packets, Modbus/TCP, OPC server, Windows API (DLL) or Web services at the same time to further integrate your assets.

Fitting Your KPI

INTEG can customize an application around Task Manager to calculate KPIs that matter most to you – quickly and cost-effectively.

About INTEG process group

Established in 1999, INTEG helps businesses with equipment optimization and integration to more effectively control, monitor, and manage their assets. INTEG provides software and hardware solutions for network connectivity, systems integration, managing key performance indicators and improving process operations. The JNIOR is a cost-effective hardware and software automation system based on open standards with advanced Internet and IT-friendly network features.

Get more information about INTEG at www.integpg.com

